



**PRODUCT CATALOGUE**

**SOLAR ENERGY SYSTEM**

**100%RENEWABLE ENERGY**

The Solar - Power Specialists

[www.Rooyasolar.com](http://www.Rooyasolar.com)



**ROOYA SOLAR ENERGY SYSTEM**



- ▶ **PV - MODULES**
- ▶ **ON-GRID INVETERS**
- ▶ **OFF- GRID INVETERS /HYBRID INVETERS**
- ▶ **SOLAR BATTERY**
- ▶ **AC-DC CABLES**
- ▶ **MC- 4 CONNECTORS**
- ▶ **EV-CHARGER**
- ▶ **SOLAR WATER PUMING**
- ▶ **SOLAR STRUCTURE AND ACCESSORIES**
- ▶ **LIFE LINE , WALKWAYS,AND ACCESSORIES**
- ▶ **DISTRIBUTION BOX AC ,DC ,CABLE TRAY**
- ▶ **MONITORING SYSTEM, AND HYBRID CONTROLLER**

CLICK ANY PRODUCT



FOLLOW US



[www.Rooyasolar.com](http://www.Rooyasolar.com)

## About Us

Step into the future of energy with Rooya Solar, where excellence meets innovation. we proudly offer a curated selection of top-quality solar products from leading brands, ensuring unparalleled performance and durability. Explore cutting-edge technologies that not only harness the power of the sun but also redefine the standards of sustainability, making Rooya the destination for those who seek the very best in clean energy solutions . Rooya Solar also offer complete EPC solutions for residential, commercial and industrial sector along with after sales maintenance programs for long term performance management.

To get an instant quote, simply send an inquiry to:  
[info@rses.ae](mailto:info@rses.ae) or contact +971 559711959 .



## OUR STRENGTH



Genuine Products



7 days a week  
customer service



Delivery on site



Warranty and  
Service



Full Consultation



Stock Availability



One stop shop



Lowest Price  
Guaranteed



Supply chain  
management

## SERVICES



- Design, Supply and Installations of PV Systems .
- PV Plant Maintenance Services .
- PV Plant Monitoring Services .
- Solar smart homes .
- O & M Services .



- EV Charging Solutions
- Design and Installation of Parking Structure .
- Design and Installation of Street Lighting .
- Construction Services for PV Plant projects
- Man Power Services for Solar Projects .



### VISION:

Our mission is to provide customer with state of the art PV module application system with a competitive price and high quality product with additional outstanding technical support and customer service .



### MISSION:

Maintain a cutting-edge technology based on green energy international standard product, that reached 30 years warranty and outstanding technical support .



### STRATEGY:

Satisfy client by offering wide range of product and services committed to delivering clean energy solution to maintain unique position in the market .



## PV-MODULES



**LESSO**

## ON-GRID INVETERS



**LESSO**



## OFF-GRID INVETERS /HYBRID



**LESSO**



## SOLAR BATTERY



**SUNLITE**

## CABLES



## WALKWAY,CABLETRAY ,STRUCTURE



## CONNECTORS /ACCESSORIES



## PRODUCTS

### SOLAR MODULES

[MAIN PAGE](#)

We believe every project deserves a high-performance foundation. Our portfolio is meticulously curated to bridge the gap between global innovation and local needs. From Top Tier 1 global leaders recognized for cutting-edge efficiency to high-value, reliable brands that maximize your investment .

#### Canadian Solar



**Mono Crystalline PERC cell  
Hiku7 Mono PERC 540-545-  
550W**

Efficiency: 21.5%



**Mono Crystalline PERC cell  
Hiku7 Mono PERC 650 W**

Efficiency: 20.9%



**Mono Crystalline PERC cell  
Hiku7 Mono PERC 660 W**

Efficiency: 21.2%

#### LESSO



**Mono Crystalline PERC  
cell 545-550W series**

Efficiency: 21.1%



**Mono Crystalline PERC cell  
545-550W All Black series**

Efficiency: 21.1%



**Mono Crystalline PERC cell  
570W Bifacial series**

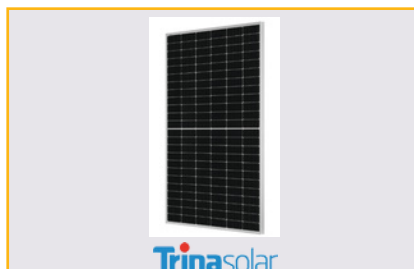
Efficiency: 21.4%

#### TRINA Solar



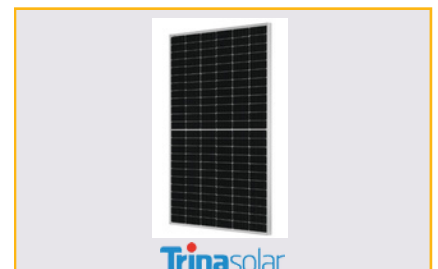
**Mono Crystalline PERC  
cell 545-555W series**

Efficiency: 21.2%



**Mono PERC Half  
cell 600W series**

Efficiency: 21.2%



**Mono Crystalline PERC  
cell 605W series**

Efficiency: 21.4%

## PRODUCTS SOLAR MODULES

[MAIN PAGE](#)

### LONGI



**Mono Crystalline PERC  
cell LR5-72HPH-550M**

Efficiency: 21.5%



**Mono Crystalline PERC  
cell LR5-72HPH-545M**

Efficiency: 21.3%



**Mono Crystalline PERC  
cell LR5-72HPH-540M**

Efficiency: 21.1%

### PEIMAR



**Mono Crystalline PERC  
cell OR6H460M**

Efficiency: 21.16%



**Mono Crystalline PERC  
cell OR10H545M**

Efficiency: 21.12%



**Mono Crystalline PERC  
cell OR6H380M (BF)**

Efficiency: 20.54%

### JA Solar



**Mono Crystalline PERC  
cell JAM72S30-550MR**

Efficiency: 21.3%



**Mono Crystalline PERC  
cell JAM72S30-545MR**

Efficiency: 21.1%



**Mono Crystalline PERC  
cell JAM72S30-540/MR**

Efficiency: 20.9%

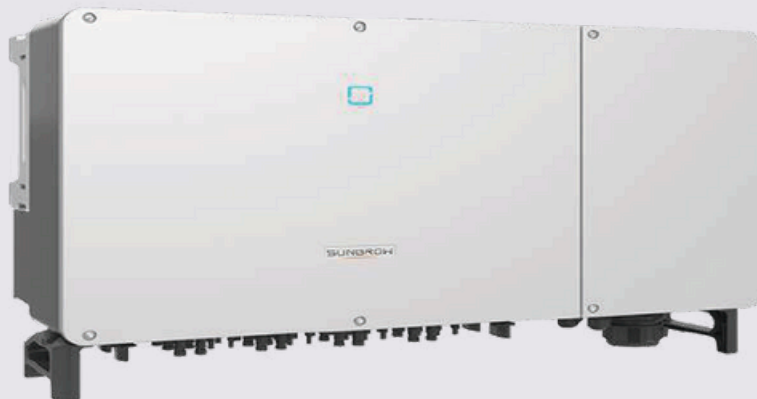


# PRODUCTS

## ON-GRID INVETERS

[MAIN PAGE](#)

**SUNGROW**



**SUNGROW**

Sungrow 125 SG Premium



**SUNGROW**

**SG2.0/2.5/3.0RS-S**  
Single-MPPT String Inverter



**SUNGROW**

**SG3.0/3.6/4.0/5.0/6.0RS**  
Double-MPPTStringInverter



**SUNGROW**

**SG5.0/6.0/8.0/10/12RT**  
Multi-MPPT String Inverter



**SUNGROW**

**SG15/20RT**  
2MPPTString Inverter



**SUNGROW**

**SG33/40/50CX**  
3/4/5MPPTString Inverter

# PRODUCTS

## ON-GRID INVETERS

[MAIN PAGE](#)

**SOFAR**



**1.1K-3.3KTL-G3**  
Single MPT String Inverter



**R3K-7.5KTL-G2**  
Dual MPT String Inverter



**3.3-12KTL-X**  
Dual MPT String Inverter



**10K-15KTL-G2**  
Single MPT String Inverter



**20K-33KTL-G2**  
Single MPT String Inverter



**50K-70KTL**  
Single MPT String Inverter



**80K-136KTL**  
8-12 MPT String Inverter



**255KTL**  
12 MPT String Inverter

# PRODUCTS

## ON-GRID INVETERS

EVVO

[MAIN PAGE](#)



**10KTL-12KTL-15KTL-HV**  
Three Phase Inverter



**20KTL-25KTL-30KTL**  
Three Phase Inverter



**50KTL**  
ThreePhase Inverter



**60KTL / 80KTL**  
ThreePhaseInverter Tri MPPT



**100KTL-110KTL**  
Three Phase Inverter



**50-60-70KTL-3P-HV**  
Three Phase Inverter



**80 KTL-HV**  
Three Phase Inverter



**100 KTL-HV**  
ThreePhaseInverter Tri MPPT



**255 KTL-HV**  
Three Phase Inverter

## PRODUCTS

### ON-GRID INVETERS

[MAIN PAGE](#)

#### GROWATT



**MIN 3KW-5KW**  
Single Phase



**MIN 6KW-10KW-11KW**  
Single Phase



**MOD 15KW-20KW-25KW**  
Single Phase



**MAC 30KW-33KW**  
Three Phase



**MAX 50KW-60KW-80KW**  
Three Phase



**MAX 100KW-125KW**  
Three Phase

#### LESSO



**LSMT600-800TL**  
Mirco Inverter



**LSBH(50~70)KTL3**  
Three Phase



**LSBH(80~110)KTL3**  
Three Phase

## ON-GRID INVETERS

[MAIN PAGE](#)

**SMA**



### SUNNY ISLAND 1.5M

Single MPT String Inverter  
1500 Vdc System  
Max. efficiency 99.1%



### SUNNY BOY 3.0M

Multi MPT String Inverter  
600 Vdc System  
Max. efficiency 97.0%



### SUNNY BOY 4.4M

Rated grid voltage  
230V/202V- 253V  
Rated power



### SUNNY TRI POWER

2 MPT String Inverter  
1000 Vdc System



### SUNNY TRI POWER

Multi MPT String Inverter  
1000 Vdc System



### SUNNY TRI POWER

Multi MPT String Inverter  
850 Vdc System



### SUNNY TRI POWER

Single MPT String Inverter  
1500 Vdc System



### SUNNY TRI POWER

12 MPT String Inverter  
1100 Vdc System



### SUNNY TRI POWER

1000 VDC System

## PRODUCTS

### OFF -GRID INVETERS

[MAIN PAGE](#)

#### EVVO



**HYD 3KW - 3.6KW**  
Single-Phase Single-MPPT



**HYD 4KW - 4.6 KW**  
Single Phase Inverter



**HYD 5KW - 6KW**  
Single Phase Inverter



**HYD 5KW - 6KW**  
Three Phase Inverter



**HYD 8KW - 10 KW**  
Three Phase Inverter



**HYD 10KW - 15KW - 20KW**  
Three Phase Inverter

#### SUNGROW



**SH 5.0/ 6.0/ 8.0/ 10 RT**  
Residential 2MPPTs Hybrid Inverters



**SH 3.0/3.6/4.0/5.0 6.0 RT**  
Residential 2 MPPTs Hybrid Inverter



## OFF -GRID INVETERS /HYBRID INVERTER

[MAIN PAGE](#)

### SOFAR



**3K-6K-EP**  
2MPPT Hybrid Inverter



**3K-6K-HV**  
2MPPT Hybrid Inverter



**5-20KTL-PH**  
2MPPT Hybrid Inverter



**5K-EP-HYD**  
1Phase Hybrid Inverter



**6K-EP-HYD**  
1Phase Hybrid Inverter

## PRODUCTS

### OFF -GRID INVETERS /HYBRID INVERTER

[MAIN PAGE](#)

#### CROWN MICRO



**OFF GRID 900W-1.6KW- 2KW**  
Single-Phase Single-MPPT



**OFF GRID 2400W**  
Single-Phase Dual-MPPT



**OFF GRID 3600W-5600W**  
Single-Phase Dual-MPPT



**HYBRID 4000W**  
ThreePhaseInverter



**OFF GRID 800W-1600W**  
Three Phase Inverter



**OFF GRID 3000W**  
ThreePhaseInverterTri MPPT



**HYBRID 4200W-6200W**  
Three Phase Inverter



**HYBRID 8200W**  
ThreePhaseInverter



**HYBRID 6000W**  
ThreePhaseInverter Tri MPPT



**HYBRID IP65 6000W**  
Three Phase Inverter



**HYBRID IP65 8000W**  
Three Phase Inverter



**HYBRID IP65 10KW-15KW**  
Three Phase Inverter Tri MPPT

## PRODUCTS

### OFF -GRID INVETERS /HYBRID INVERTER

[MAIN PAGE](#)

#### XINDUN POWER



**HYBRID 700W-1.5KW**  
Single-Phase Single-MPPT



**HYBRID 2.0KW-3.5KW**  
Single-Phase Dual-MPPT



**HYBRID 4.0KW-7.0KW**  
Single-Phase Dual-MPPT



**HYBRID 700W-2.0KW**  
Single Phase Inverter



**HYBRID 3.0KW-4.0KW**  
Single Phase Inverter



**HYBRID 5.0KW-6.0KW**  
SinglePhaseInverterMPPT



**HYBRID 350W-1.0KW**  
Single Phase Inverter



**HYBRID 1.2KW-2.5KW**  
Single Phase Inverter



**HYBRID 3.0KW-4.0KW**  
SinglePhaseInverterMPPT



**HYBRID 80KW-120KW**  
Three Phase InverterMPPT



**HYBRID 125KW-150KW**  
Three Phase InverterMPPT



**HYBRID 160KW-200KW**  
Three Phase Inverter Tri MPPT

### SOLAR PUMPING CONTROLLER

[MAIN PAGE](#)



**SOLAR PUMPING  
CONTROLLER 75KW**

Rating of Output Power 75Kw



**SOLAR PUMPING  
CONTROLLER 55KW**

Rating of Output Power 55Kw  
Rating of Input Power 128Amp



**SOLAR PUMPING  
CONTROLLER 22KW**

Rating of Output Power 22Kw  
Rating of Input Power 51Amp



**SOLAR PUMPING  
CONTROLLER 11KW**

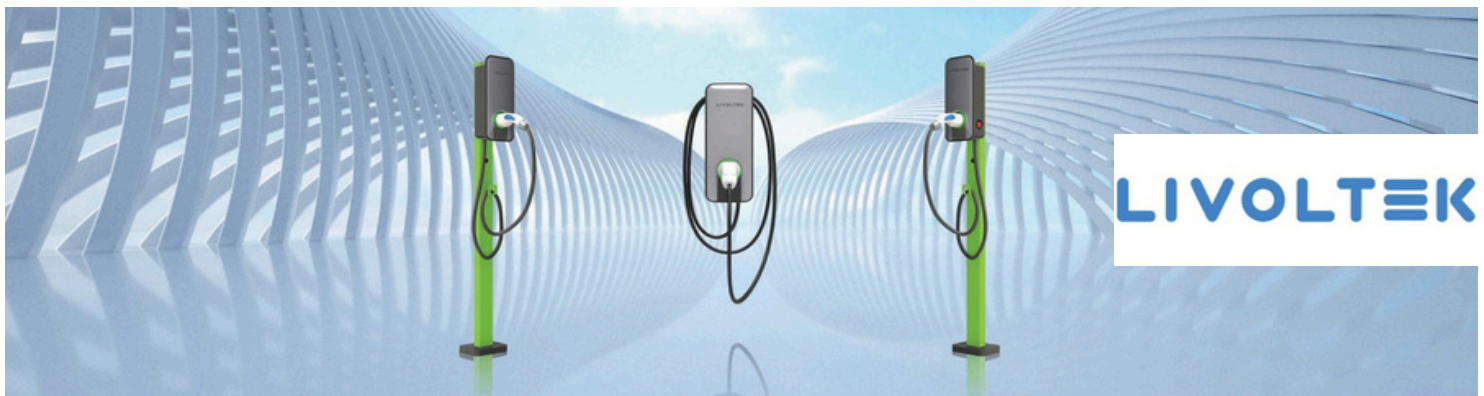
Rating of Output Power 11Kw



**SOLAR PUMPING  
CONTROLLER 5.5KW**

Rating of Output Power 5.5Kw

### EV Charger



**SMART SOLAR EV  
CHARGER**

Single-phase 7.3kW  
Three-phase 11/22kW

## PRODUCTS

### SOLAR BATTERY

#### SUNGROW

[MAIN PAGE](#)



##### LITHIUMBATTERY BANK

9.6KWH-100AH  
32.5 KG



##### LITHIUMBATTERY BANK

12.5KWH-150AH  
45 KG



##### LITHIUMBATTERY BANK

25KWH-200AH  
61 KG

#### VICTRON ENERGY



##### LITHIUM SUPERPACK BATTERY

12.8V-60AH  
9.5 KG



##### LITHIUM SUPERPACK BATTERY

12.8V-100AH  
14 KG



##### LITHIUM SUPERPACK BATTERY

12.8V-200AH  
21 KG

#### SUNLITE



##### TUBLAR BATTERY

12V-150AH  
62.2 KG



##### TUBLAR BATTERY

12V-200AH  
67 KG



##### TUBLAR BATTERY

12V-300 AH  
69.2 KG

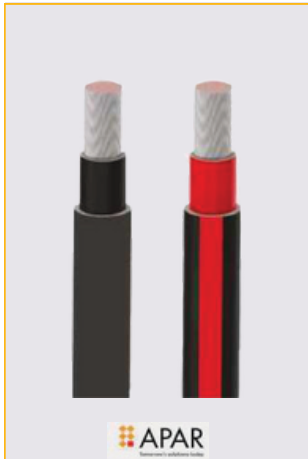
# PRODUCTS

## SOLAR CABLE

APAR

[MAIN PAGE](#)

POLYCAB



1.5 KV DC SOLAR CABLE | EN-50618/2014 | Operating Temperature - 40 to +120

Cross Section(Sq. mm)	Weight/km in Kg	Role Size(m)	Resistance(Ω/km)
4	57	500/2000	5.090
6	75	300/2000	3.390
10	120	300/2000	1.950
16	178	300/1000	1.240
25	275	500/1000	0.795
35	370	500/1000	0.565
50	520	500/1000	0.393
70	700	500/1000	0.277
95	910	500/1000	0.210
120	1140	500/1000	0.164
150	1430	500/1000	0.132
185	1760	500/1000	0.108
240	2290	500/1000	0.081
300	2900	500/1000	0.065

### Solar DC Cables from PV Module to Array Junction Box (as per TUV Specification- EN 50618 : 2014)

Single Core In Sq. mm.	E-BEAM XLPO Insulation thickness- Nominal in mm.	E-BEAM XLPO Sheath thickness- Nominal in mm.	Overall Diameter in mm.	Tolerance on diameter	Tinned Copper Maximum Resistance @ 20°C (ohms-Ω/Km)	Current Carrying Capacity (Single Cable in Air) (in Amps - A)
1.5	0.7	0.8	4.8	+/- 0.4	13.70	30
2.5	0.7	0.8	5.2	+/- 0.4	8.210	41
4	0.7	0.8	5.8	+/- 0.4	5.090	55
6	0.7	0.8	6.4	+/- 0.4	3.390	70

### Solar DC Cables from Array Junction Box to Main Junction Box & MJB to Inverter (as per TUV Specification- EN 50618 : 2014)

Single Core In Sq. mm.	E-BEAM XLPO Insulation thickness- Nominal in mm.	E-BEAM XLPO Sheath thickness- Nominal in mm.	Overall Diameter in mm.	Tolerance on diameter	Tinned Copper Maximum Resistance @ 20°C (ohms-Ω/Km)	Current Carrying Capacity (Single Cable in Air) (in Amps - A)
10	0.7	0.8	7.3	+/- 0.4	1.950	98
16	0.7	0.9	8.6	+/- 0.4	1.240	132
25	0.9	1.0	10.4	+/- 0.4	0.795	176
35	0.9	1.1	11.8	+/- 0.4	0.565	218
50	1.0	1.2	13.8	+/- 0.4	0.393	276
70	1.1	1.2	15.6	+/- 0.4	0.277	347
95	1.1	1.3	17.7	+/- 0.4	0.210	416
120	1.2	1.3	19.5	+/- 0.5	0.164	488
150	1.4	1.4	21.6	+/- 0.5	0.132	566
185	1.6	1.6	24.2	+/- 0.5	0.108	644
240	1.7	1.7	27.1	+/- 0.5	0.0817	775



## PRODUCTS

### SOLAR DISTRIBUTION BOX

[MAIN PAGE](#)

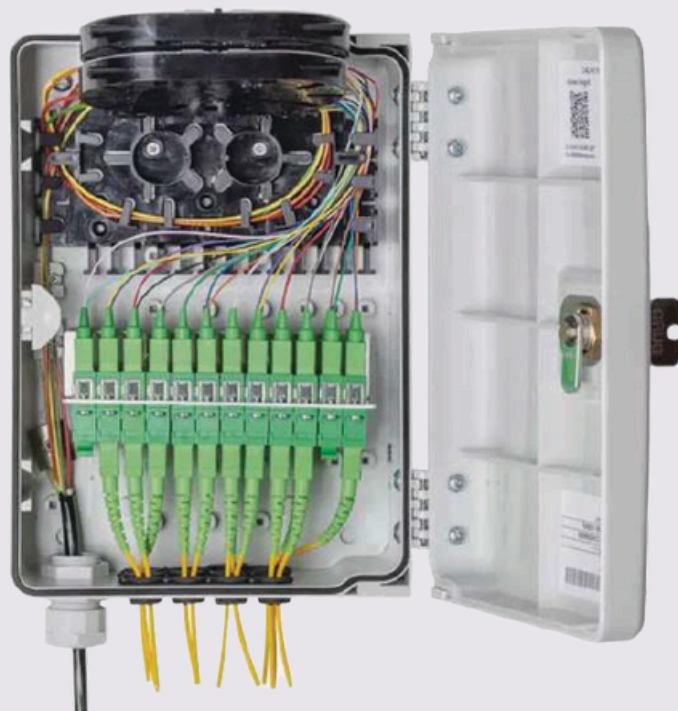
SOLAR AC AND DC DISTRIBUTION BOXES (AC DB AND DC DB)

ABS/PC ENCLOSURE

SOLAR BOS

SOLAR ACCESSORIES

CUSTOM -BUILT SWITHEGEAR



# PRODUCTS

## CONTROLLERS

[MAIN PAGE](#)



### ASC- 4 CONTROLLER WITH HMI CONNECTION

Plug & play HMI available



### ASC- 4 BATTERY CONTROLLER

Meteorological data representation



### AGC - 150 HYBRID GENSET CONTROLLER

Minimum genset load  
PV included in modes



### AGC - 150 HYBRID GENSET CONTROLLER CORE

Minimum genset load  
Load calculation in terms of solar power



### ENERGY METER MIC-2MKI

RS-485 Modbus communication  
Large LCD screen with white backlight

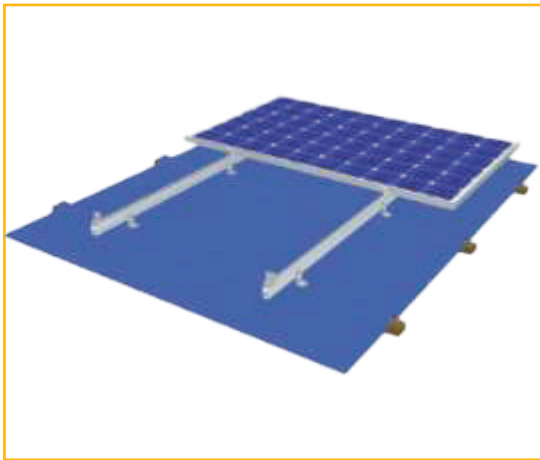


### AGI 410 TOUCH SCREEN

Resolution 1280×800 pixel  
Active display area 10.1" diagonal

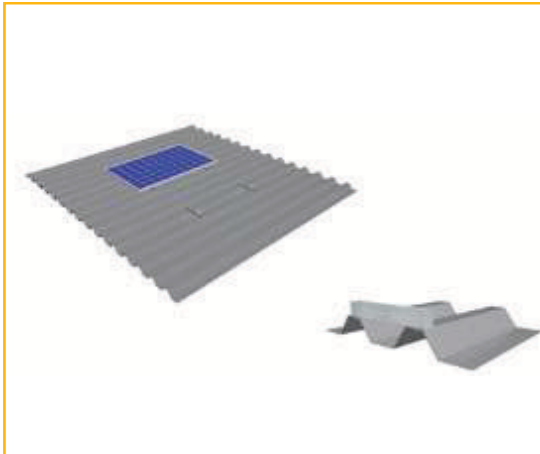
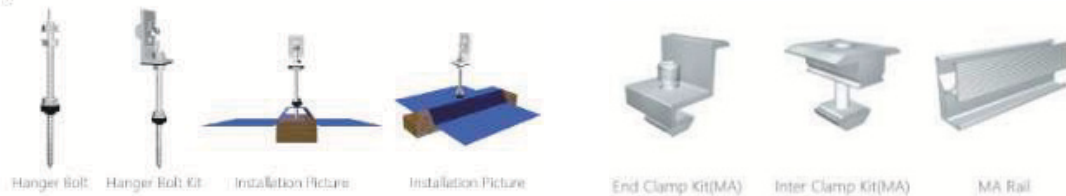
## PV MOUNTING SYSTEM -RCC

[MAIN PAGE](#)



Feature	L Feet Kit & Hanger Bolt Kit
Components	L Feet, Hanger Bolt M200*10, EPDM Pad M10, Washer M8, Cross Module, Conical Washer M8, Hexagon Socket Head Bolt M25*8
Applicable Scope	Trapezoidal Metal Roof
Tilt Angle	Flush mounted
Service and Support	10 year guarantee on parts and workmanship. Easy to install durable. Ensured structural strength, long-due lifespan.

### Components Pictures



Features	PV Mounting System	Roof
Components	MA Mini Rail H45,End Clamp Kit,Inter Clamp Kit	
Applicable Scope	Trapezoidal Metal Roof	
Tilt Angle	Flush mounted	
Service and Support	10 year guarantee on parts and workmanship. Easy to install durable. Ensured structural strength, long-due lifespan.	

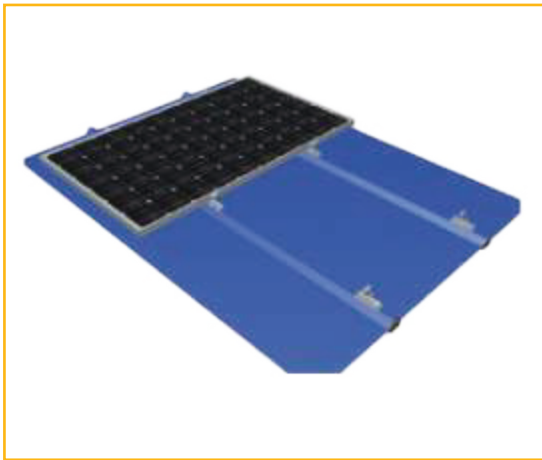
### Components Pictures



## PRODUCTS

### PV MOUNTING SYSTEM -ROOF

[MAIN PAGE](#)



Features	Mini-Rail Kit Metal Roof PV Mounting System
Components	Mini-Rail Kit,End Clamp Kit,Inter Clamp Kit
Applicable Scope	Trapezoidal Metal Roof
Tilt Angle	Flush mounted
Service and Support	10 year guarantee on parts and workmanship. Easy to install durable. Ensured structural strength, long-due lifespan.

Components Pictures



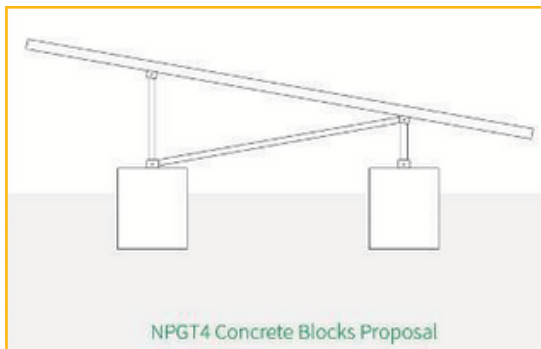
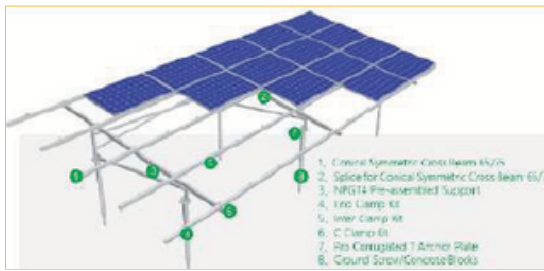
Features	Standing Seam Metal Roof Solar PV Mounting System
Components	Seam Clip,L Feet Kit,MA Rail,End Clamp Kit(MA),Inter Clamp Kit(MA)
Applicable Scope	Trapezoidal Metal Roof
Tilt Angle	Flush mounted
Service and Support	10 year guarantee on parts and workmanship. Easy to install durable. Ensured structural strength, long-due lifespan.

Components Pictures



## PV MOUNTING SYSTEM -GROUND

[MAIN PAGE](#)



Features	New Pro Ground Terrace (NPGT4)
Components	Conical Symmetric Cross Beam, Splice for Conical Symmetric Cross Beam, NPGT, Pre-assembled Support, C Clamp Kit, U Inter Clamp Kit, Wide End Clamp Kit, Pro Corrugated T Anchor Plate, Ground Screw
Applicable Scope	It suitable for small to medium scale solar PV projects, Flat concrete roof & Ground.
Tilt Angle	0-20°
Service and Support	10 year guarantee on parts and workmanship.
	Easy to install durable. Ensured structural strength, long-due lifespan.

### Components Pictures



## PRODUCTS

### PV MOUNTING SYSTEM -GROUND

[MAIN PAGE](#)



Features	Pro Ground Terrace PGT5
Components	PGT5 Pre-assembled Support, C Clamp Kit, U25 Inter Clamp Kit, Wide End Clamp Kit, Pro Corrugated T Anchor Plate, T Anchor Plate
Applicable Scope	It suitable for small to medium scale solar PV projects, Flat concrete roof & Ground.
Tilt Angle	0-20°
Service and Support	10 year guarantee on parts and workmanship. Easy to install durable. Ensured structural strength, long-due lifespan.

#### Components Pictures

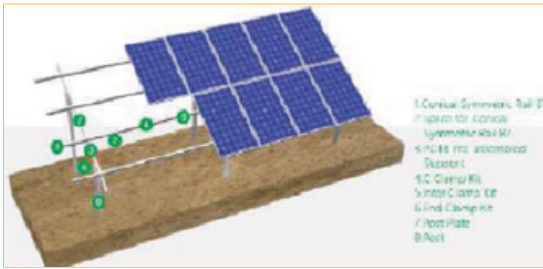




# PRODUCTS

## PV MOUNTING SYSTEM -GROUND

[MAIN PAGE](#)



Features	Pro Ground Terrace PGT8
Components	Conical Symmetric Rail 87, Splice for Conical Symmetric Rail 87, C Clamp Kit, U25 Inter Clamp Kit, End Clamp Kit, Post Plate, Post
Applicable Scope	It suitable for small to medium scale solar PV projects, Flat concrete roof & Ground.
Tilt Angle	0-20°
Service and Support	10 year guarantee on parts and workmanship.
	Easy to install durable. Ensured structural strength, long-due lifespan.

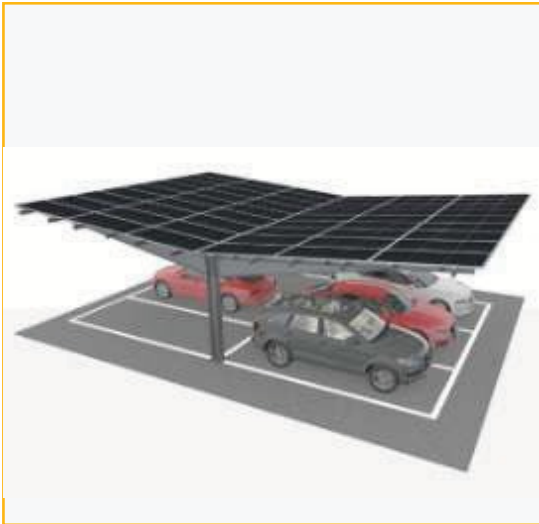
### Components Pictures

<b>Conical Symmetric Rail 87</b>	<b>Splice for Conical Symmetric Rail 87</b>	<b>PCTB Pre-assembled Support</b>	<b>C Clamp Kit</b>	<b>U25 Inter Clamp Kit</b>	<b>End Clamp Kit</b>	<b>Post Plate</b>	<b>Post</b>
Specification : 15x8x8/ Standard length : 3100mm 4100mm 5100mm	Specification : 12x10mm Hexa Self-Tapping Screw With EPDM Washer 376.3*18	Cross Beam C Clamp 80 T-Shape Joint Flat Washer Spring Washer Hexagon Socket Bolt	C Clamp Symmetric Cross Module Spring Washer M8 Hexagon Socket Bolt	U25 Inter Clamp Symmetric Cross Module Spring Washer M8 Hexagon Socket Bolt	End Clamp Symmetric Cross Module Spring Washer M8 Hexagon Socket Bolt	Material : A16005-T5 Post Plate A : L90 Post Plate B : L70	Q235B (Hot-Dip Galvanized) L90*95

# PRODUCTS

## PV MOUNTING SYSTEM -CARPORT

[MAIN PAGE](#)



Features	Pro Mono Carport System
Components	for Rail,Rail Connector,H-shape Steel,H-shape Steel with Welding Plate,Inter Clamp kit,End Clamp kit,Pull Rod kit-A,Pull Rod kit-B
Applicable Scope	PV carport not only has the function of ordinary carport, but also can generate electricity and income through solar power generation.
Tilt Angle	5-15°
Service and Support	10 year guarantee on parts and workmanship. Easy to install durable. Ensured structural strength, long-due lifespan.

Components Pictures



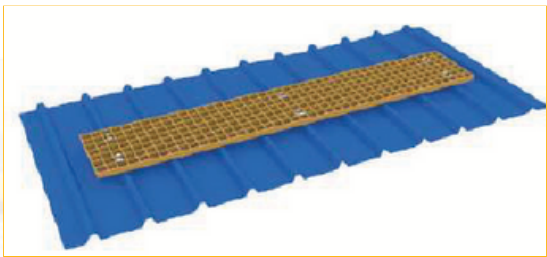
Features	Pro Mono Carport System
Components	End Clamp Kit,U25 Inter Clamp Kit,C Clamp Kit,T Joinder Kit,Anchor Plate,Side Beam,Square Tube
Applicable Scope	PV carport not only has the function of ordinary carport, but also can generate electricity and income through solar power generation.
Tilt Angle	5-15°
Service and Support	10 year guarantee on parts and workmanship. Easy to install durable. Ensured structural strength, long-due lifespan.

Components Pictures

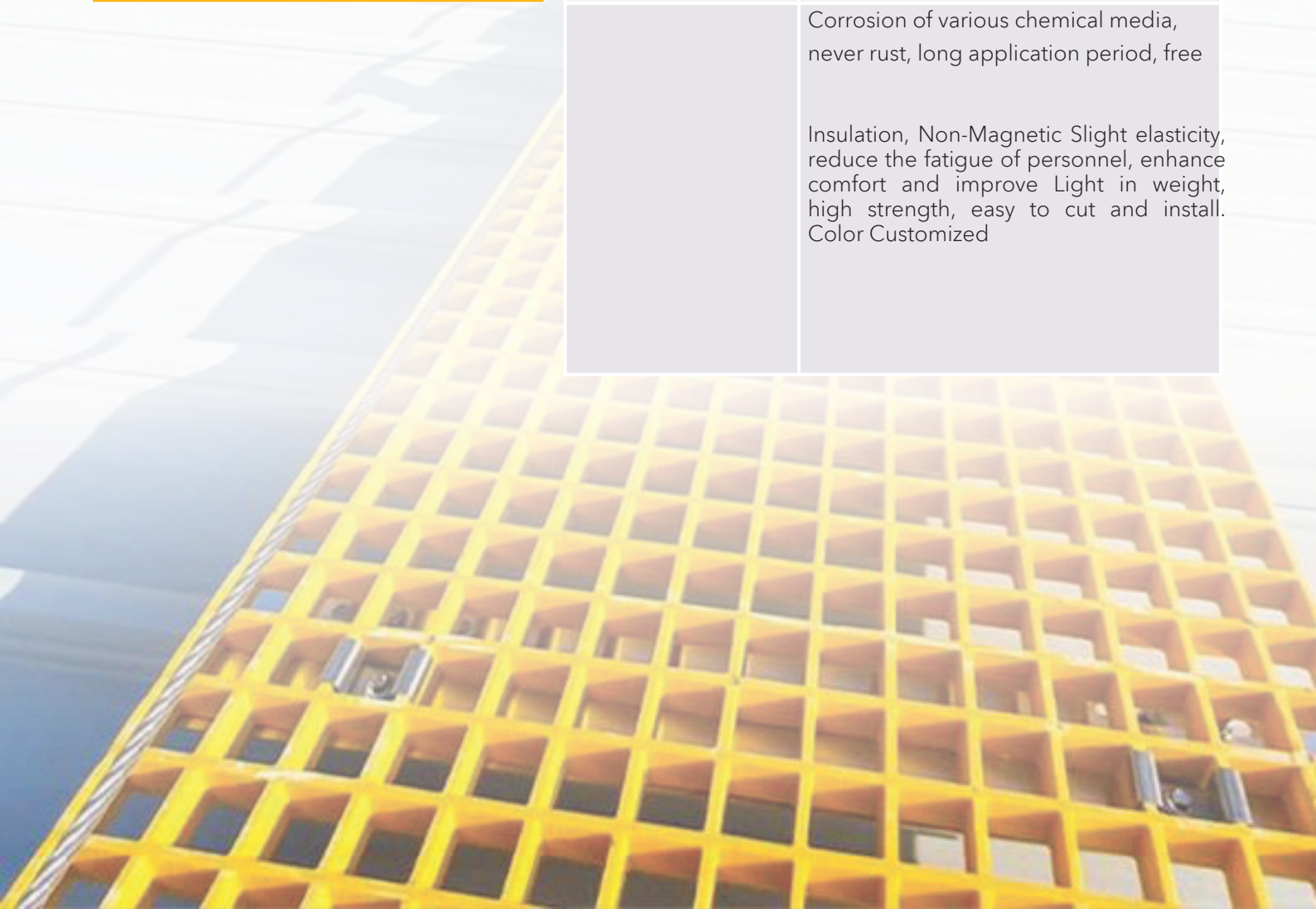


FRP -WALK WAYS

[MAIN PAGE](#)



Features	Walk Way
Components	It is a kind of unsaturated polyester resin (including m-benzene type, o-phenyl type, vinyl type and phenolic type, bisphenol A type, etc.) as the matrix, and
Applicable Scope	platforms, trench cover plates, double-layer grounds, walkways, aisles, stair treads, suspended ceilings, tree guards,
Service and Support	2 years guarantee on parts and workmanship.
	Corrosion of various chemical media, never rust, long application period, free  Insulation, Non-Magnetic Slight elasticity, reduce the fatigue of personnel, enhance comfort and improve Light in weight, high strength, easy to cut and install. Color Customized



### SOLAR PV CONNECTORS

[MAIN PAGE](#)



#### PHOTOVOLTAIC CONNECTOR WM4C

Equivalent of MC4's



#### PHOTOVOLTAIC CONNECTOR PV-STICK

Equivalent of MC4's -Crimp

Female



#### PV SOLAR STRAIGHT CONNECTORS

Rated Voltage 1500  
Vdc Impulse withstand



#### PV SOLAR BRANCH CONNECTORS

Rated Voltage 1500 Vdc  
Impulse withstand



#### PV SOLAR PANEL CONNECTORS

Rated Voltage 1500 Vdc



#### STRAIGHT IN LINE FUSE CONNECTORS-1000V

Rated Voltage 1000 Vdc  
Impulse withstand Voltage  
12kV



#### PV SOLAR FUSE TERMINAL BLOCK

Rated Voltage 1000Vdc



#### GPV FUS ELINK

Rated Voltage 1000Vdc



#### PV SOLAR FUSE TERMINAL BLOCK

Rated Voltage 1500 Vdc

## INFO DETAILS

Mob : + 971 55971 1959

Email : [info@rses.ae](mailto:info@rses.ae)

Web : [WWW.ROOYASOLAR.COM](http://WWW.ROOYASOLAR.COM)

Dubai -U.A.E



Management Systems  
Certification Body